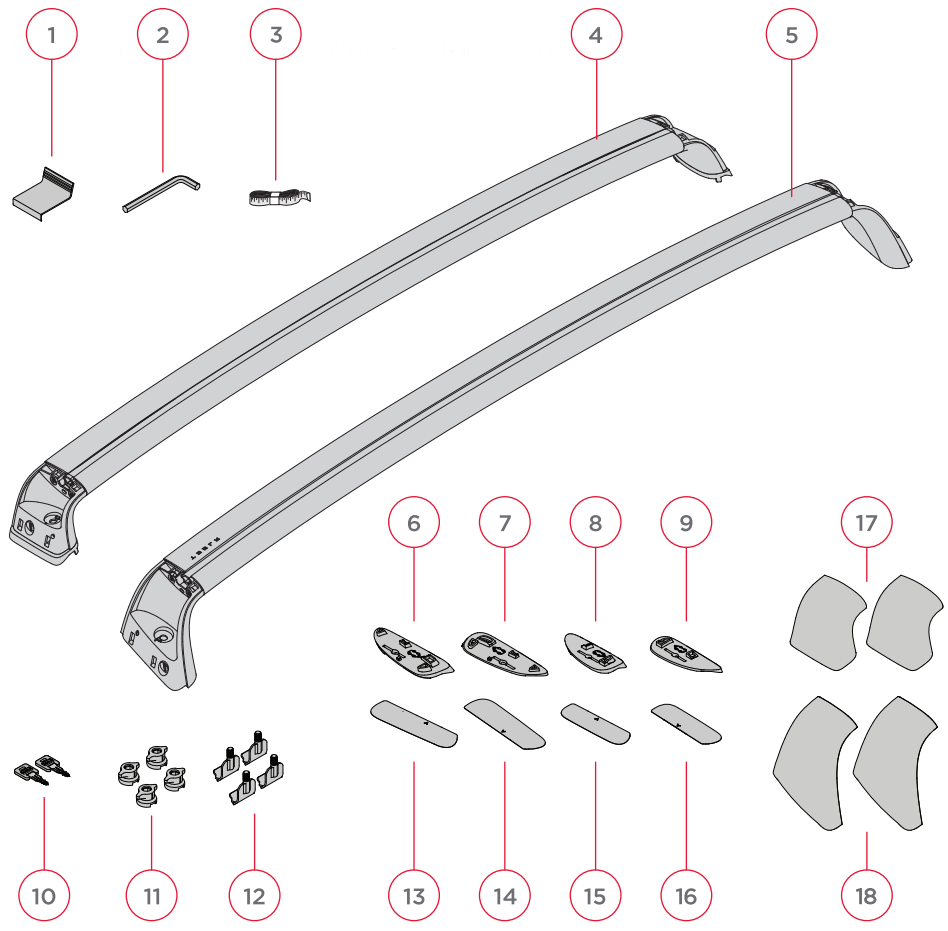
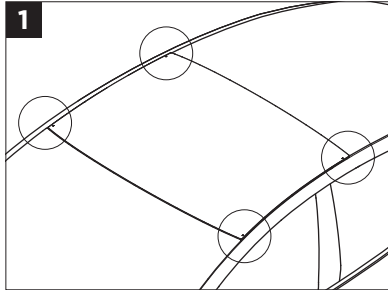




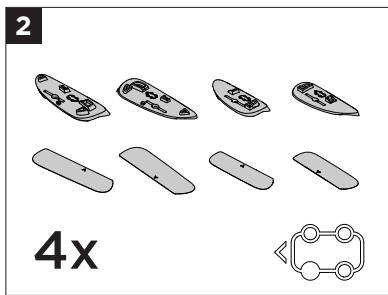
Model 3 Roof Rack
Owner's Manual



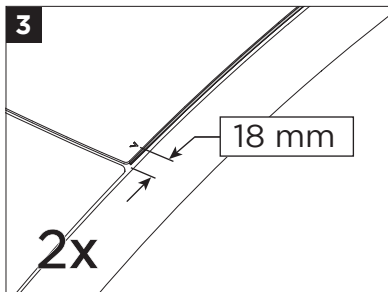
- | | |
|-----------------------------|---|
| 1. clip tool | 10. keys |
| 2. hex wrench | 11. wingnuts |
| 3. tape measure | 12. clips |
| 4. rear crossbar | 13. anti-abrasion tape (front driver side) |
| 5. front crossbar | 14. anti-abrasion tape (front passenger side) |
| 6. front driver side pad | 15. anti-abrasion tape (rear drivers side) |
| 7. front passenger side pad | 16. anti-abrasion tape (rear passenger side) |
| 8. rear driver side pad | 17. cover (rear crossbar) |
| 9. rear passenger side pad | 18. cover (front crossbar) |



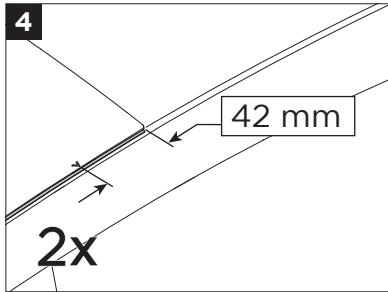
Thoroughly clean vehicle's rooftop around the location of the arrows on the glass.



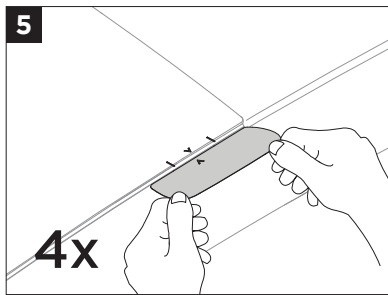
Use the icon on the footpads (6-9) to help identify the appropriate position on the vehicle and match anti-abrasion tape (13-16) to footpad (6-9).



To locate the front arrows measure 18 mm from the front edge of the glass top.

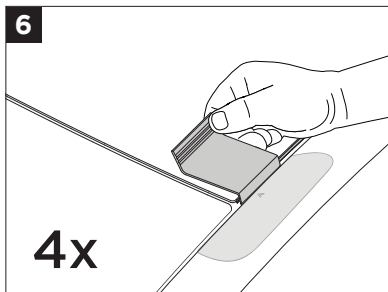


To locate the rear arrows measure 42 mm from the rear edge of the glass top.

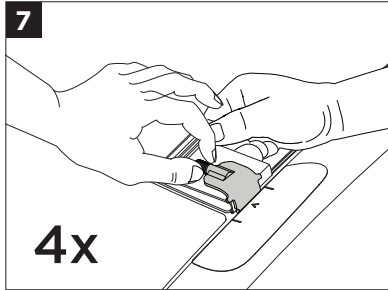


Apply (13) anti-abrasion tape to the front driver side of the vehicle by aligning the arrow on the glass with the arrow on the anti-abrasion tape (13), and aligning the edge of the tape with the edge of the trim line.

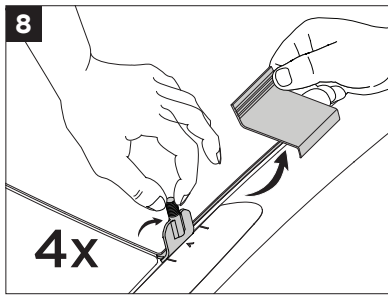
Repeat for the other three corners of the car.



Use the clip tool (1) to carefully retract the rubber gasket at the arrow location.

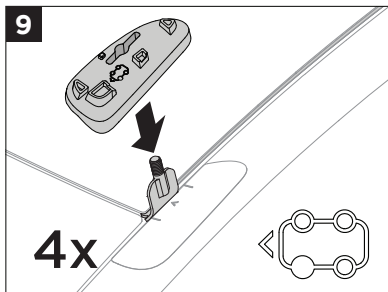


Keeping the clip tool in place, insert a clip (12) at the arrow location.



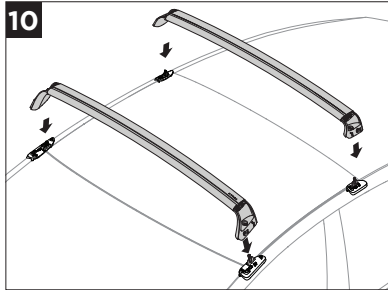
Remove the clip tool (1), being sure the clip (12) is engaged in the metal receiver under the glass. Pull up and wiggle to be sure it's properly engaged. Be sure the center of hook aligns with the arrow

Repeat steps 4 to 6 to install a clip (12) on the other three corners of the car.

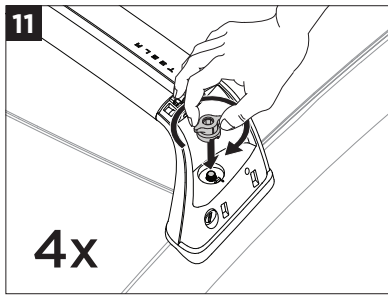


Place the front driver side pad (6) over the clip on the front driver side. Use the icon to help identify and install the correct pad (6-9) in the proper location.

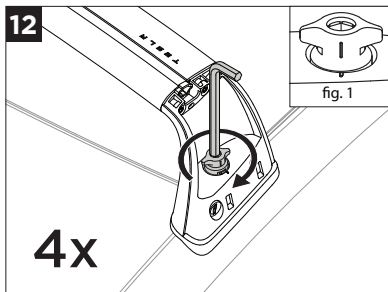
Repeat to install the remaining pads (7-9) at the other three corners of the car.



CROSSBAR INSTALLATION:
 Ensure all four hooks are engaged, properly aligned (step 5-6), and in the upright position. Then, carefully place the front and rear crossbars (4-5) over the pads.

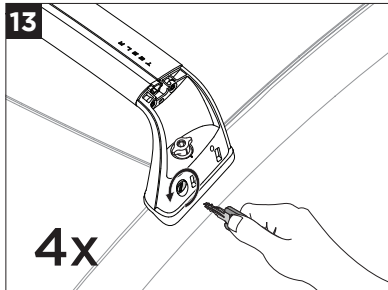


Install the wingnut (11) and hand tighten onto each of the towers.

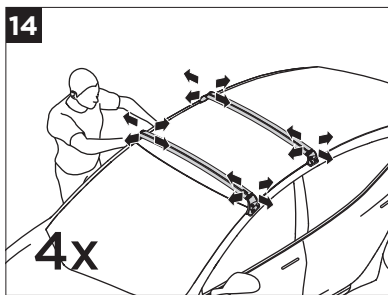


Tighten the wingnuts with the hex wrench (2) until the tower is firmly affixed to the vehicle. We recommend tightening to 2.5-3.5 Nm. To confirm the tower is properly installed, pull in all directions and ensure there's no movement. In order to lock the system, the mark on the wingnut must align with the mark on the tower (see fig. 1).

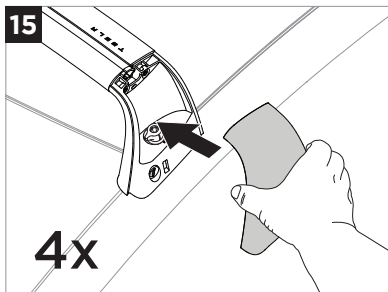
***Overtightening may result in vehicle damage.**



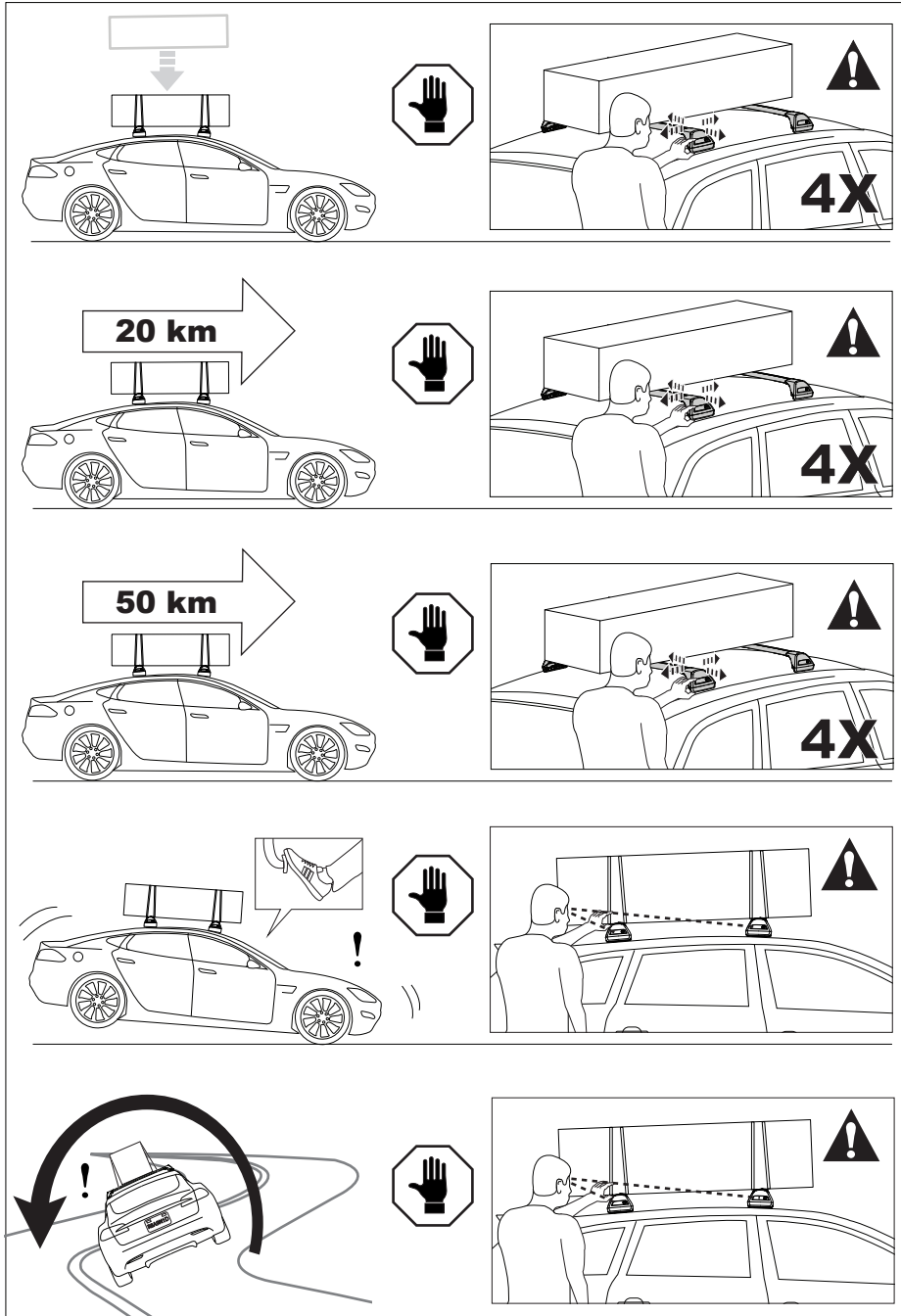
Use the key (10) to lock each tower.

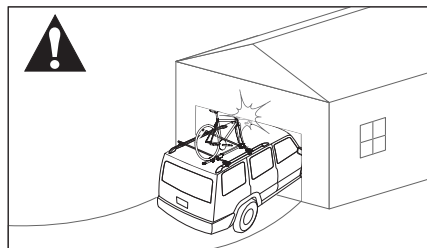
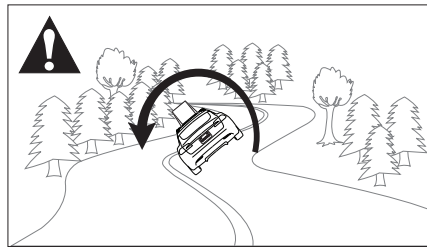
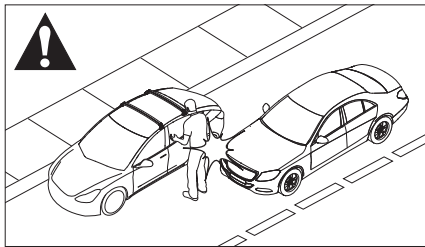
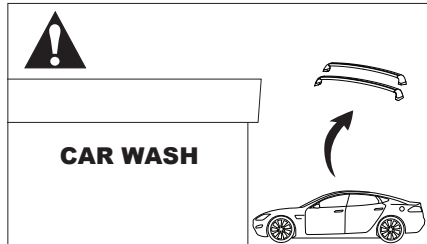
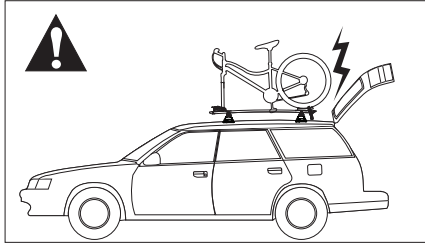



Test that the front and rear crossbars are securely installed by pulling vigorously in all directions.

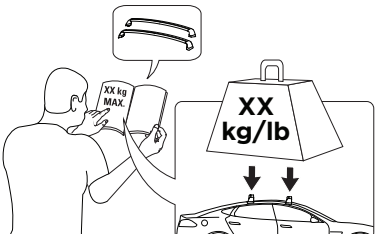
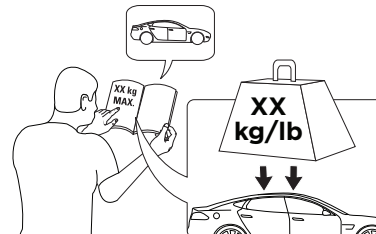


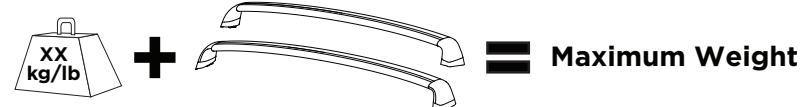
Install covers. Start with the bottom edge then press the top into place.





Maximum Weight  **65 kg (150 lbs)**





EN IMPORTANT WARNINGS

Rack Installation

Inadequately secured loads and incorrectly mounted roof racks and accessory racks can come loose during travel and cause serious accidents! Therefore, installation, handling and use must be carried out in accordance with product and vehicle instructions.

In addition to these instructions, review the mounting instructions for the roof rack and the operating instructions of the vehicle.

These instructions should be kept together with the vehicle's operating instructions and carried in the vehicle when in use and en route.

For your own safety, you should only use tested (e.g. GS-tested) roof racks that are authorized for use with your vehicle.

For roof racks that do not specify the distance between the front and rear crossbars, the distance shall be at least 700mm or as large as possible. Please note that changes (e.g. additional drill holes) to the accessory rack's attachment system are not permissible.

Check attachment hardware and load for tight fit and function:

- Before the start of any journey.
- After driving a short distance (50km or 30 minutes) following rack or load install.
- At regular intervals on longer journeys.
- Every two hours on bad terrain.
- After interruption of a journey during which the vehicle was left unsupervised. (check for damage due to outside intervention)

Rack Loading

Do not exceed the maximum load specified for the roof rack, accessory rack or the maximum load recommended by the vehicle manufacturer.

Max Roof Load = weight of roof rack + weight of accessory racks + weight of load.

The roof rack or accessory rack may not project over the gutter. For cars without gutters over the outer edge, refer to StVZO (or nation regulations).

Load shall be uniformly distributed with the lowest possible center of gravity.

Load should not substantially extend beyond the loading surface of the roof rack. refer to StVZO (or nation regulations).

Vehicle Driving and Regulations

The speed driven must be suited to the load transported and to official speed limits. In the absence of any speed limits, we recommend a maximum speed of 130 km/h.

When transporting any load, the speed of the vehicle must take into account all conditions such as the state of the road, the surface of the road, traffic conditions, wind, etc. Vehicle handling, cornering, braking and sensitivity to side winds will change with the addition of roof top loads.

Off-road driving is not recommended and could result in damage to your vehicle or your gear.

Maintenance

The accessory rack should be carefully cleaned and maintained, particularly during the winter months. Use only a solution of water and standard car wash liquid without any alcohol, bleach or ammonium additives.

For reasons of fuel economy and the safety of other road users, the accessory rack and roof rack should be removed when not in use.

Periodically inspect accessory rack for damage. Replace lost, damaged or worn parts. Use only original spare parts obtained from a stocking specialist, dealer or manufacturer.

Any changes made to the roof racks and accessory racks as well as the use of spare parts or accessories other than those supplied by the manufacturer will lead to the lapsing of the manufacturer's warranty and liability for any material damage or accidents. You should observe these instructions to the letter and only use the original parts supplied.

Tesla HQ
3500 Deer Creek Road
Palo Alto, CA 94304

Tesla Europe
Burgemeester Stramanweg 122
1101 EN, Amsterdam
Netherlands

Tesla 1498781-00-H
Yakima PN 1035908 Rev H
Type A per DIN 75-302

DIN 75-302 Type A



Model 3 Roof Rack Owner's Manual

www.shop.tesla.com

T E S L A