

CCS2 TO NACS ADAPTER

OWNER'S MANUAL





Contents

Warnings.....2

Specifications.....3



SAVE THESE IMPORTANT SAFETY INSTRUCTIONS. This document contains important instructions and warnings that must be followed when using the CCS2 to NACS Adapter.



WARNING: Read this document before using the CCS2 to NACS Adapter. Failure to follow any of the instructions or warnings in this document can result in fire, electrical shock, serious injury or death.



WARNING: The CCS2 to NACS Adapter is designed only for charging a Tesla vehicle. Do not use it for any other purpose or with any other vehicle or object. The CCS2 to NACS Adapter is intended only for vehicles that do not require ventilation during charging.



WARNING: Do not use the CCS2 to NACS Adapter if it is defective, appears cracked, frayed, broken or otherwise damaged, or fails to operate.



WARNING: Do not attempt to open, disassemble, repair, tamper with, or modify the CCS2 to NACS Adapter. The adapter is not user serviceable. Contact Tesla for any repairs.



WARNING: Do not disconnect the CCS2 to NACS Adapter while charging the vehicle.



WARNING: To prevent damage to the CCS2 to NACS Adapter, or any components, handle with care when using or transporting it. Do not subject it to strong force or impact or do not pull, twist, tangle, drag or step on it.



WARNING: Protect the CCS2 to NACS Adapter from moisture, water and foreign objects at all times. If any exist or appear to have damaged or corroded the CCS2 to NACS Adapter, do not use the CCS2 to NACS Adapter.



WARNING: Do not touch the CCS2 to NACS Adapter's end terminals with sharp metallic objects, such as wire, tools or needles.



WARNING: Do not damage the CCS2 to NACS Adapter with sharp objects.



WARNING: Do not insert foreign objects into any part of the CCS2 to NACS Adapter.



WARNING: Ensure that the charge cable and the CCS2 to NACS Adapter do not obstruct pedestrians or other vehicles or objects.



WARNING: Use of the CCS2 to NACS Adapter may affect or impair the operation of any medical or implantable electronic devices, such as an implantable cardiac pacemaker or an implantable cardioverter defibrillator. Check with the electronic device manufacturer concerning the effects that charging may have on such electronic device before using the CCS2 to NACS Adapter.



WARNING: Do not use cleaning solvents to clean the CCS2 to NACS Adapter.

If you have any questions or concerns about your CCS2 to NACS Adapter, contact Tesla by emailing Homecharging@tesla.com.



Specifications

Use only to connect the charge cable on a CCS Combo 2 charging station to a Tesla vehicle that is capable of Combo 2 DC charging.

Voltage	1,000V DC
Max Current	500A
Enclosure Rating	IP67
Operating Temperature	-22°F to +122°F (-30°C to +50°C)
Storage Temperature	-40°F to +185°F (-40°C to +85°C)



CAUTION: Do not operate or store the CCS2 to NACS Adapter in temperatures outside the ranges listed above.

Charging Time

Charging times vary based on the power and current available from the charging station, subject to various conditions. Charge time also depends on ambient temperature and the vehicle's Battery temperature. If the Battery is not within the optimal temperature range for charging, the vehicle will heat or cool the Battery before charging begins. For the most up-to-date information on how long it takes to charge your Tesla vehicle, go to the Tesla web site for your region.

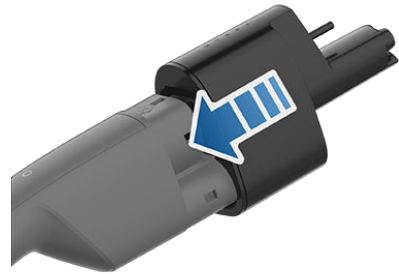
How to Charge

Plugging In



CAUTION: Always inspect the CCS2 to NACS Adapter for damage prior to each use.

1. Open the charge port door on your Tesla vehicle.
2. Align the CCS2 to NACS Adapter to the end of the charging station's cable and push together, ensuring it is firmly attached.



3. Plug the CCS2 to NACS Adapter into your Tesla vehicle and wait for the vehicle to engage a latch that holds the adapter in place.
4. Follow the instructions on the charging station to start the charging session.

Check the vehicle's touchscreen to confirm that charging is in progress.

NOTE: The operation of the charging station will vary depending on the manufacturer. For details, refer to the charging station's instructions.

Unplugging

When charging is complete:

1. Stop the charging session using the vehicle's touchscreen, the mobile app or the charging station's screen.
2. Unlock the vehicle's charge port.
3. Hold the charging handle with one hand and the CCS2 to NACS Adapter with the other hand and pull both toward you simultaneously.
4. Remove the CCS2 to NACS Adapter from the charging handle by pulling the CCS2 to NACS Adapter away from the handle.



5. Return the charging handle to its dock on the charging station.
6. Store the CCS2 to NACS Adapter in the vehicle for future use.
7. The charge port door automatically closes after you remove the CCS2 to NACS Adapter.

NOTE: If your vehicle is not equipped with a motorized charge port door, you may need to push the charge port door closed.

Troubleshooting

If your Tesla vehicle fails to charge when using the CCS2 to NACS Adapter, check the display on your Tesla vehicle for information about any error that may have occurred. Always check the status of the charging station. Although the CCS2 to NACS Adapter is designed to work with all CCS2 charging stations, it may be incompatible with some. Because continuous improvement is an ongoing goal at Tesla, and is necessary to ensure compatibility with as many charging stations as possible, both present and future, Tesla reserves the right to make product modifications at any time without notice. As a result, your vehicle may receive an occasional software update that includes an update to the CCS2 to NACS Adapter.

Questions?

For Tesla contact information for your region, log into your Tesla account. You can also email Homecharging@tesla.com.

NOTE: When reporting a charging problem, please provide the brand, model, and location of the charging station.

T E S L A

Publication Date: 2026/4/21